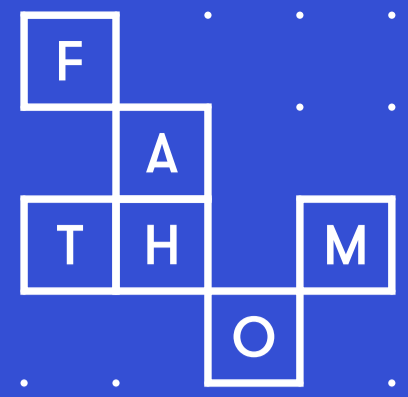


Fathom-Global 2.0

A step-change in your ability to understand global flood risk.



Flood Risk Intelligence

Fathom-Global 2.0 provides flood hazard data from the cutting edge of academic research.

Fathom-Global is unique in harnessing world-leading modelling techniques, combined with the very latest terrain and hydrography data.

100%

of river channels

All river channels are explicitly represented.

10

return periods

From 1:5 year to 1:1000 year. Return periods can be categorised to suit your risk appetite.

90m

resolution

Fathom Global is available for the whole planet, specific regions or individual countries

Fluvial & Pluvial flooding

Total representation of rainfall-driven flooding.

Defended & undefended layers

Compare the impact of modelled flood defences.

Fathom-Global 2.0 enables:

- Quantification and mitigation of flood risk.
- Consistent analysis and pricing of global exposures.
- Competitive advantage for risk selection, pricing and underwriting.
- Improved portfolio management at a global scale.
- Triage your flood exposures across any portfolio.
- Loss analysis by flood types.
- Output can be categorised to reflect your risk appetite.
- Rapid risk screening and scoring of global assets.

Fathom-Global 2.0 represents the most robust and comprehensive flood hazard dataset in the world.

By coupling the latest topography and hydrography datasets with cutting-edge hydraulic modelling techniques, Fathom have produced truly world-leading flood data for the whole planet. All methods have been published in pre-eminent scientific journals, representing a step change in our ability to understand flooding at the global scale.

Fathom-Global simulates inundation across all rivers in the world using a 2D hydraulic modelling framework.

The most important component of any global flood model is the terrain data. In earlier versions of Fathom's Global data, errors in the underlying terrain elevation data could be seen. These errors, which can be seen in the form of stripes in the Mekong Delta (below), make it very difficult to build accurate flood models.

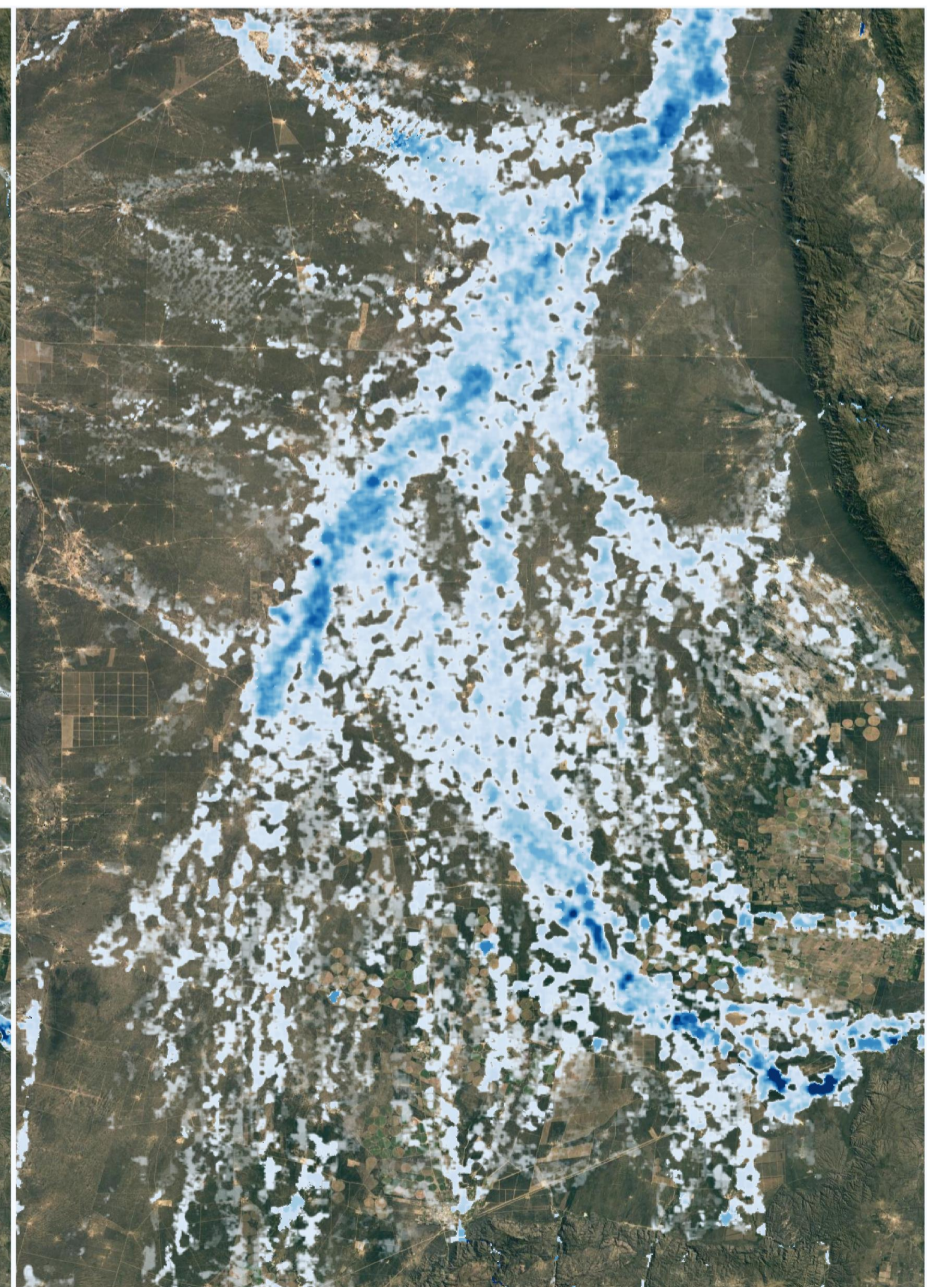
Fathom's latest Global MERIT-DEM and MERIT-Hydro, the best terrain and hydrography data currently available globally. They provide the most accurate view of the Earth's surface elevation and the location of all rivers. These two components are crucial in building robust flood models.

By integrating these datasets into Fathom's hydraulic modelling framework, Fathom-Global yields flood hazard maps of multiple return periods for every river on the planet.

Fathom-Global 1.0 vs 2.0

Right image: Fathom-Global 1.0 output, showing difficulties in defining floodplain topography and smaller channels.

Left image: Fathom-Global 2.0 updated using the cutting-edge MERIT-DEM and MERIT-Hydro data. The best available global terrain and hydrography data.

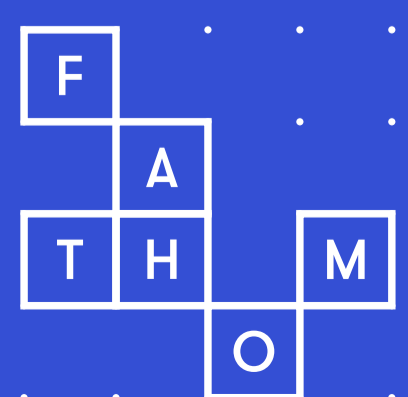


Please get in touch if you would like to know more about our products.

Email
info@fathom.global

Visit our site:
www.fathom.global/fathom-global

Follow us on Twitter:
[@fathom_global](https://twitter.com/fathom_global)



Flood Risk Intelligence